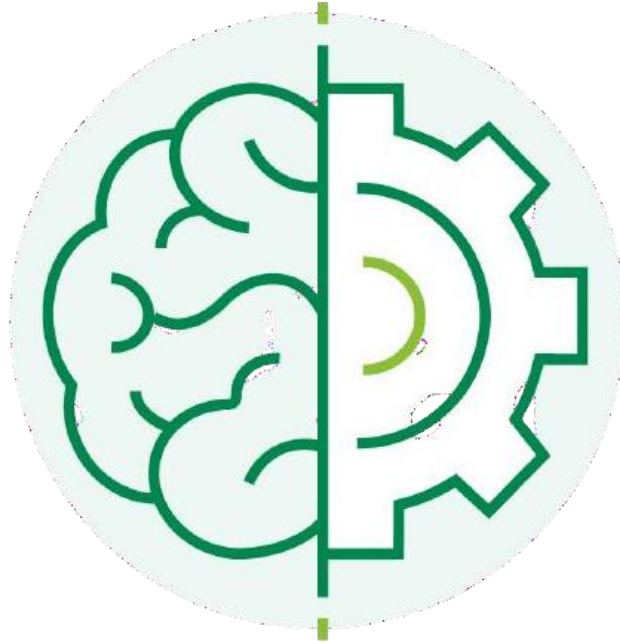


Top-Grade Curricular to get Top-Notch Skills



DATASCIENCE WITH ML COURSE SYLLABUS



WWW.SOFTLOGICSYS.COM | +91 86816 84318

SLA Institute: No:10, PT Rajan Salai, KK Nagar, Chennai: 600078
Website: www.slainstitute.com | www.softlogicsys.in | www.slajobs.com
Mob: +91 88707 67784 | +91 8608 700340 | +91 8681 884318



Datascience with ML Course Syllabus

SLA is one of its kind Institute which not only equips you in technology skills but will train you for free in Aptitude skills, Soft Skills, Mock Interviews, Interview Skills, Work ethics and Corporate Values that you need to know to get into IT Industry. Our training is given by expert real time development experienced trainers and we enable each and every student of ours to do their own real time projects by the end of the program.

We do not buy you a job by bribing companies to secure a place in IT, instead we equip you with the skills needed to get employed in IT and will support you with unlimited number of relevant interview opportunities so that your career in IT becomes assured. Our support will be there until you get placed in an IT Company as that's our mission too.

If you want to just have an IT certification, you can do your course anywhere. If you aspire to get into an IT Job, then you should choose SLA. With SLA, your IT dream will definitely come into reality.

Please go through the long list of our student reviews / offer letters @ www.joinsla.com to get to know more about us.

Predictive Modeling – Basics

- ❖ Introduction to Machine Learning & Predictive Modeling
- ❖ Types of Business problems
- ❖ Mapping of Techniques
- ❖ Regression vs. classification vs. segmentation vs. Forecasting
- ❖ Major Classes of Learning Algorithms
- ❖ Supervised vs Unsupervised Learning
- ❖ Different Phases of Predictive Modeling (Data Pre-processing, Sampling, Model Building, Validation)



Machine Learning Algorithms & Applications

- ❖ Implementation in Python
- ❖ Linear Regression
- ❖ Segmentation - Cluster Analysis (K-Means)
- ❖ Decision Trees (CART/CD 5.0)
- ❖ Support Vector Machines(SVM)
- ❖ Other Techniques (KNN, Naïve Bayes,)
- ❖ Important python modules for Machine Learning (SciKit Learn, scipy, etc)

Deep Learning

- ❖ Artificial Neural Networks(ANN)

Are you happy with our course curriculum? Then why you delay? Take your mobile phone and ring us quickly on +91 86816 84318